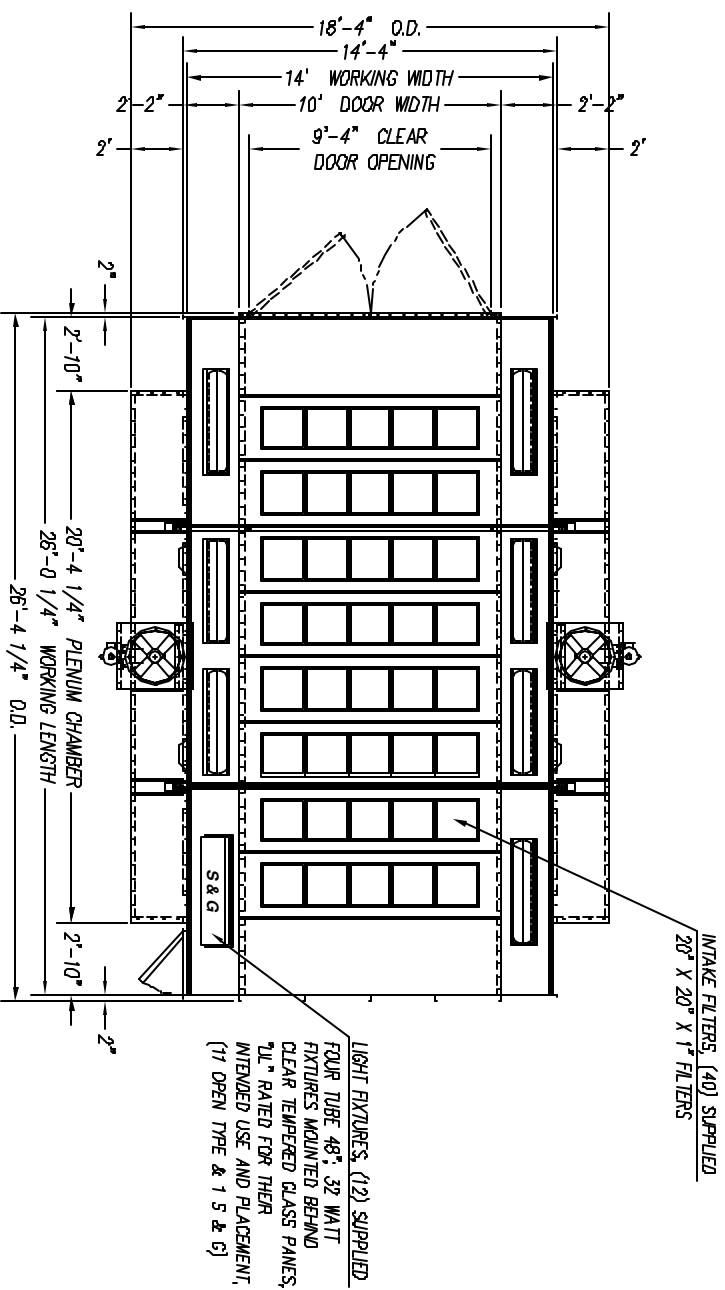
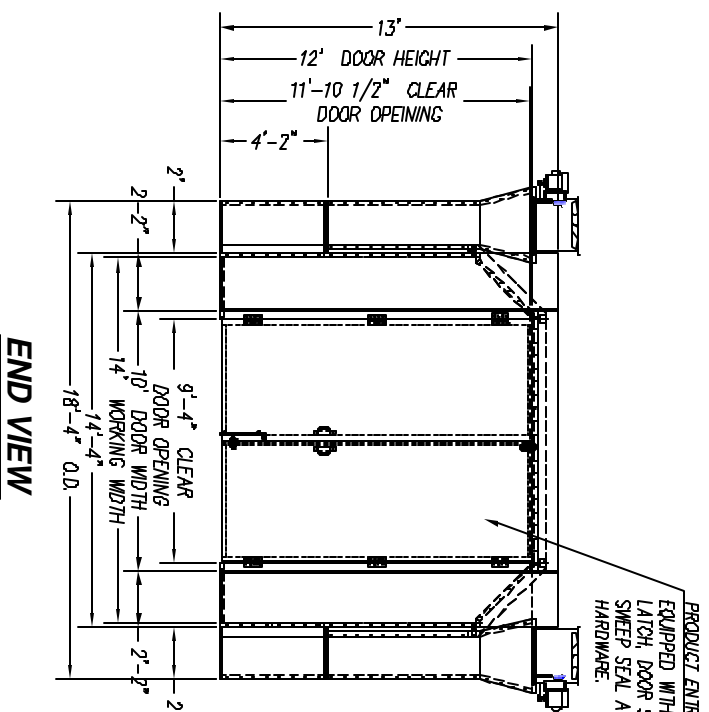


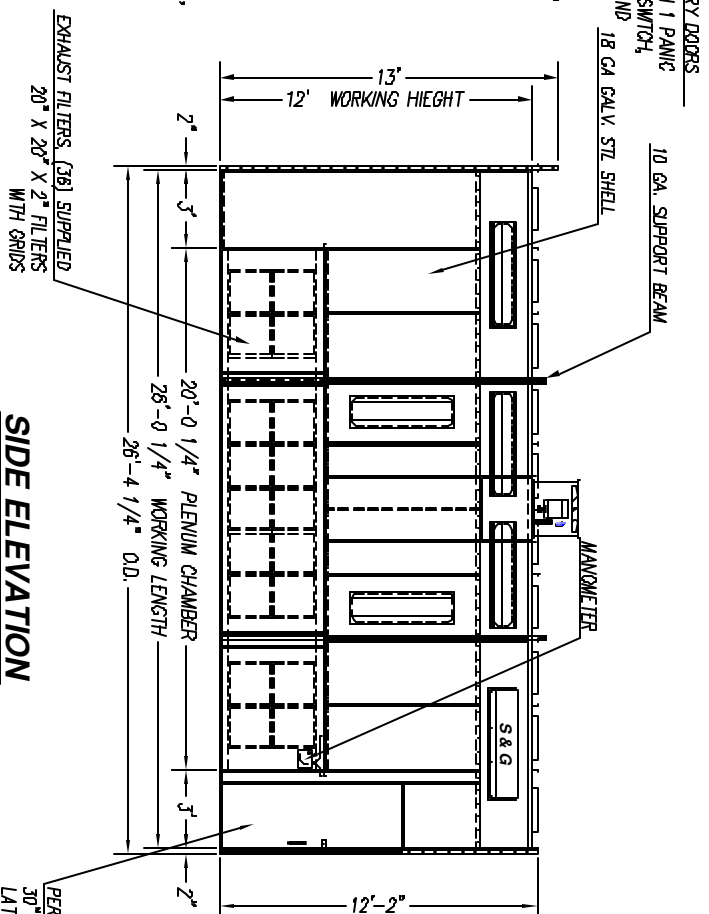
COL-MET SPRAY BOOTHS ARE MFG. IN ACCORDANCE WITH IFC-2000 SECTION 1504.1.2.1 THROUGH 1504.1.2.2, SECTION 1504.2.3, SECTION 1504.2.5, SECTION 1504.2.7, SECTION 1504.3, SECTION 1504.3.1, SECTION 1504.3.2, AND NFPA-33



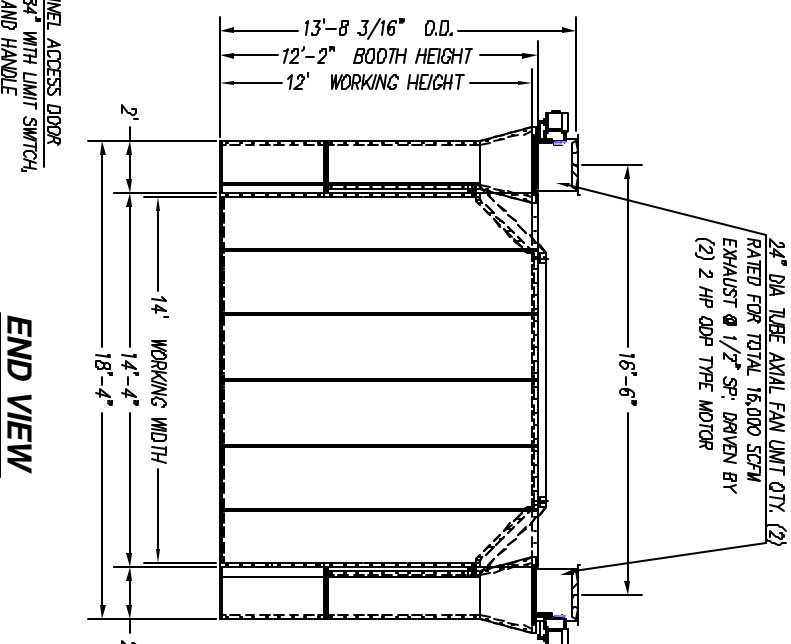
PLAN VIEW



END VIEW



SIDE ELEVATION



END VIEW

THE ASSEMBLY DRAWINGS YOU HAVE RECEIVED ARE IN A GENERAL REFERENCE. OPTIONAL ACCESSORIES MAY NOT BE SHOWN AS PROVIDED. PLEASE REFER TO YOUR PURCHASE ORDER FOR A COMPLETE DESCRIPTION OF YOUR BOOTH ORDER.

APPROVAL DRAWING

MANUFACTURING WILL AWAIT APPROVAL

END USER SIGNATURE: _____

MOTOR SUPPLY VOLTAGE: _____

LIGHT SUPPLY VOLTAGE: _____

PLEASE SIGN THE APPROVAL DRAWING, MAKE ANY NOTES TO DRAWING THAT MAY AFFECT ORDER. NOTE: ANY CHANGES TO DRAWING MAY EFFECT CHARGES, DELAY APPROVAL PROCESS AND DELAY THE PRODUCTION OF YOUR ORDER.

VOLTAGE CONFIRMATION

MOTOR 480/3/60 VAC
LIGHTS 120/1/60 VAC
IF DIFFERENT, INDICATE BELOW
VAC (MOTOR)
VAC (LIGHTS)

GENERAL NOTES:

BOOTH TYPE: CAT 28 SIDE
STATE PRESSURE: 60"
VOLTS: 480/3/60
TOTAL SERVICE AMPS: 19
VOLTAGE: 120/1/60

COMPONENT DESCRIPTIONS:

1) LIGHT AIR TOTAL: 128 TOTAL QTY.: 12
2) EXHAUST FAN SIZE: 24" QTY.: 2
3) MOTOR HP: 15.62 WITH 2 HP
4) MOTOR TYPE: 24BL AIRS
5) MOTOR TYPE: 24BL AIRS
6) MOTOR TYPE: 24BL AIRS
7) MOTOR TYPE: 24BL AIRS
8) MOTOR TYPE: 24BL AIRS
9) EXHAUST FILTER TOTAL: 40 TYPE OF FILTER: 20" X 20" X 1" PAD
10) EXHAUST FILTER TOTAL: 28 TYPE OF FILTER: 20" X 20" X 2" PAD

GENERAL NOTES:

1. WORK CHAMBER WILL BE BOLTED CONSTRUCTION WITH #8/18 BOLTS ON STANDARD 8" CENTERS. COLLECTOR WILL BE WELDED CONSTRUCTION.
2. WORK CHAMBER TO BE 18 GA. GALVANIZED UNPAINTED SHEET METAL.
3. ALL MOTOR CONTROLS SWITCHES, LIGHT LAMPS OR TUBES, INCLUDING CONNECTIONS TO EQUIPMENT TO BE FURNISHED AND INSTALLED BY CUSTOMER EXCEPT AS NOTED.
4. AMPLE AIR MAKEUP AND AIR SPACE WITHIN FRONT OF BOOTH MUST BE PROVIDED IN ORDER TO INSURE PROPER OPERATION OF BOOTH.
5. ALL LOCAL, CITY & STATE PERMITS AND INSURANCE APPROVAL TO BE OBTAINED BY CUSTOMER.
6. CUSTOMER TO FURNISH: ROOF-PATCH IF REQUIRED.



CAT 28 SIDE DOWNDRAFT SOLID BACK 3-VIEW

DATE: 11/23/05	DATE: 11/23/05	DATE: 11/23/05
DESIGNER: PW	DESIGNER: PW	DESIGNER: PW
CHECKER: PW	CHECKER: PW	CHECKER: PW
APPROVAL:	APPROVAL:	APPROVAL:
DATE:	DATE:	DATE:
SCALE: NTS	SCALE: NTS	SCALE: NTS
NO. OF SHEETS: 1 OF 1	NO. OF SHEETS: 1 OF 1	NO. OF SHEETS: 1 OF 1