

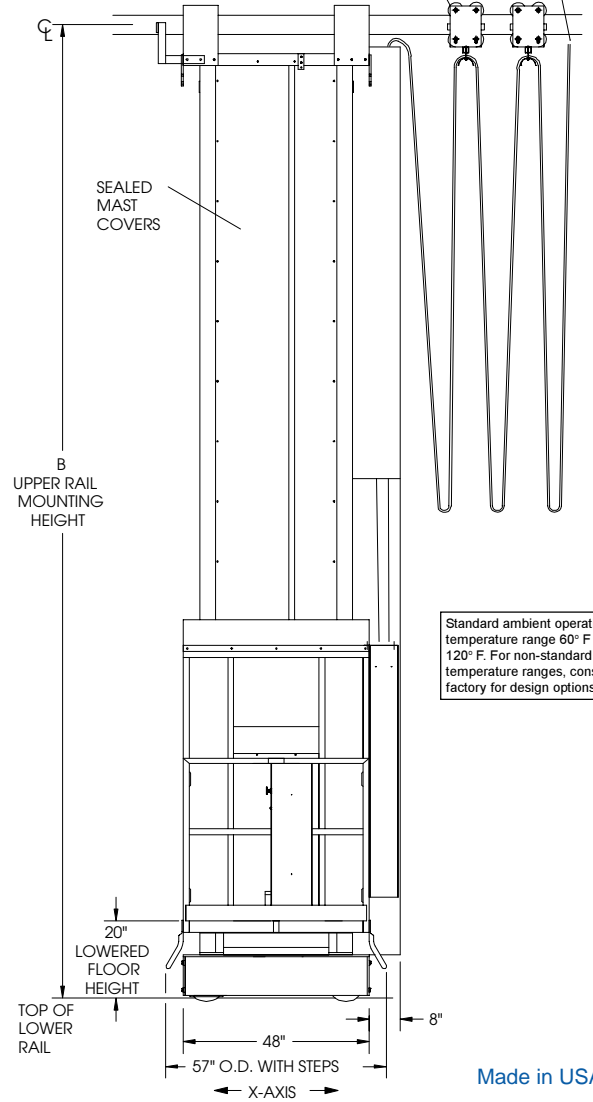
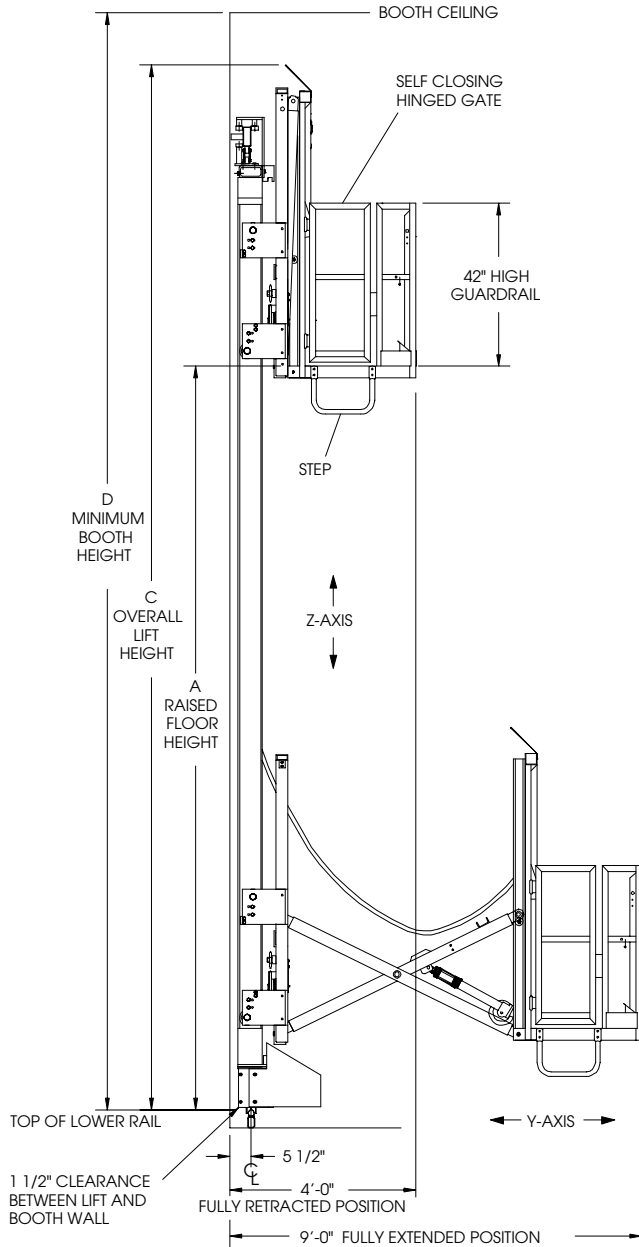
MULTI-AXIS MAST LIFTS

PRODUCT SPECIFICATIONS

Space Required for Festooning System in Stored Position		
Booth Length	Storage Space	Approx. # Carriers
0-50 Ft.	3 Ft.	4
50-80 Ft.	4 Ft.	6
80-120 Ft.	6 Ft.	9

If booth does not have enough length to allow access to ends of product, consult factory for options.

MAIN AIR SUPPLY:
CUSTOMER TO
SUPPLY PLUMBING
TO THIS POINT



Standard ambient operating temperature range 60° F to 120° F. For non-standard temperature ranges, consult factory for design options.

Made in USA

(LOWER RAIL IS DESIGNED TO SPAN 5 FT FOR USE IN GRATING FLOOR. FOR DETAILS, OR OTHER RAIL OPTIONS, CONSULT FACTORY.)

STANDARD MODEL	A	B	C	D
LP3-89	8'-0"	12'-11.25"	14'-6"	15'-0"
LP3-99	9'-0"	13'-11.25"	15'-6"	16'-0"
LP3-109	10'-0"	14'-11.25"	16'-6"	17'-0"
LP3-119	11'-0"	15'-11.25"	17'-6"	18'-0"
LP3-129	12'-0"	16'-11.25"	18'-6"	19'-0"
LP3-139	13'-0"	17'-11.25"	19'-6"	20'-0"
LP3-149	14'-0"	18'-11.25"	20'-6"	21'-0"
LP3-159	15'-0"	19'-11.25"	21'-6"	22'-0"
LP3-169	16'-0"	20'-11.25"	22'-6"	23'-0"
LP3-179	17'-0"	21'-11.25"	23'-6"	24'-0"
LP3-189	18'-0"	22'-11.25"	24'-6"	25'-0"
LP3-199	19'-0"	23'-11.25"	25'-6"	26'-0"
LP3-209	20'-0"	24'-11.25"	26'-6"	27'-0"

Dimensions are from top of lower rail.

INSTALLATION KIT (1 Required Per Lift)

Part Number: use LP3 [booth length] {booth height} with suffix IK
(i.e. LP36020-**IK**)

Kit Includes:

- Upper and Lower Rails for Mounting Lift to Booth Walls with Lower Rail Stops
- Festooning system with trolleys, main air supply hose and hose support grip. System is capable of carrying 1 additional line supplied by customer, up to 3/4" for breathing air.

Note: Model selected should not exceed the inside height of booth.

For calculation take the raised floor height (Dimension A) of the lift plus an additional 7' for personnel.

• All models meet applicable OSHA/ANSI Standards as interpreted by LPI, Inc. •