

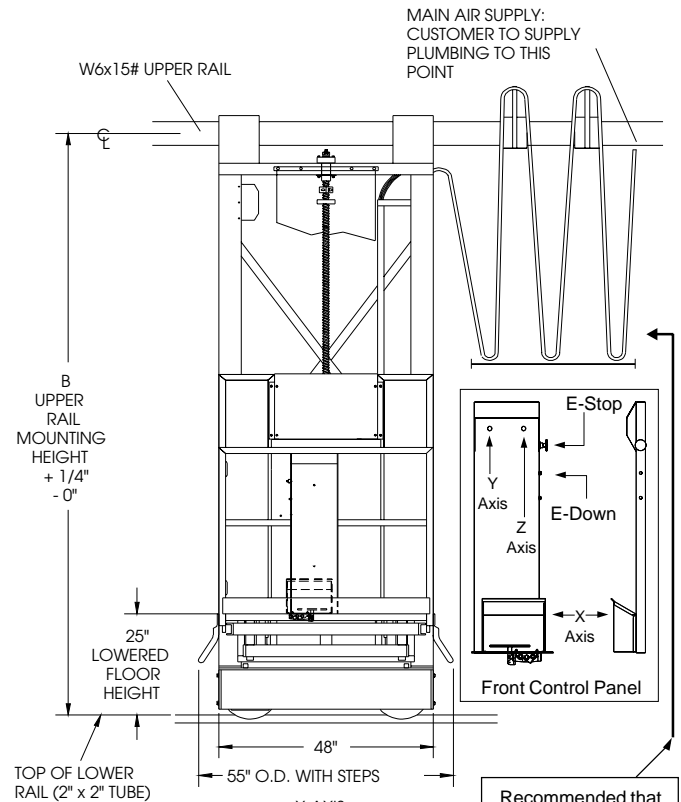
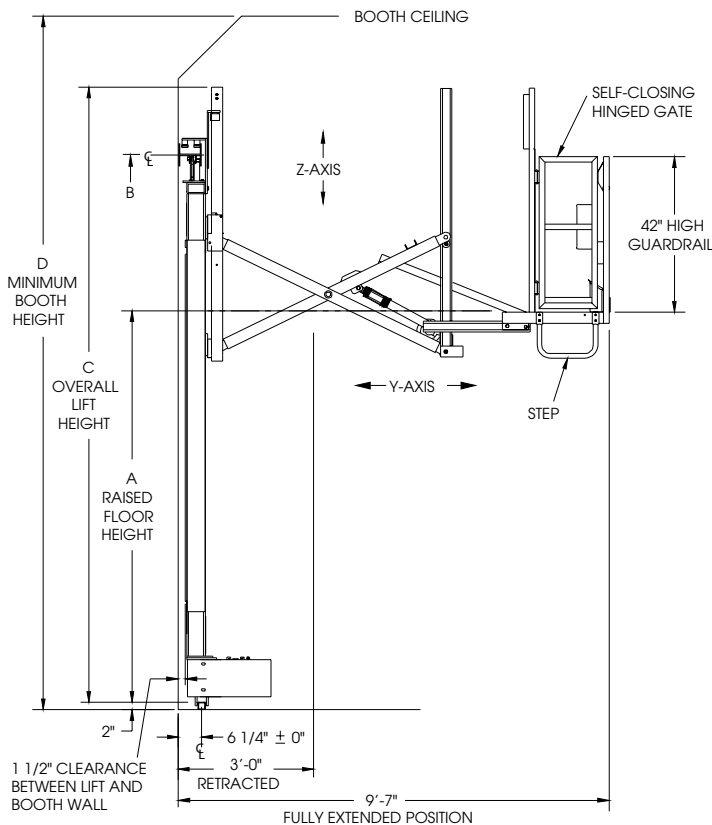
MULTI-AXIS MAST LIFTS

PRODUCT SPECIFICATIONS

| SPACE REQUIRED FOR FESTOONING SYSTEM IN STORED POSITION | | |
|---|---------------|--------------------|
| Booth Length | Storage Space | Approx. # Carriers |
| 0-50 Ft. | 3 Ft. | 4 |
| 50-80 Ft. | 4 Ft. | 6 |
| 80-120 Ft. | 6 Ft. | 9 |

If booth does not have enough length to allow access to ends of product, consult factory for options.

Standard ambient operating temperature range 60° F to 120° F. For non-standard temperature ranges, consult factory for design options.



Made in USA

Recommended that festooning hose be kept a minimum of 7' above floor level.

| STANDARD MODEL | A | B | C | D |
|----------------|--------|--------|--------|--------|
| LP2-810 | 8'-0" | 11'-3" | 13'-3" | 15'-0" |
| LP2-910 | 9'-0" | 12'-3" | 14'-3" | 16'-0" |
| LP2-1010 | 10'-0" | 13'-3" | 15'-3" | 17'-0" |
| LP2-1110 | 11'-0" | 14'-3" | 16'-3" | 18'-0" |
| LP2-1210 | 12'-0" | 15'-3" | 17'-3" | 19'-0" |
| LP2-1310 | 13'-0" | 16'-3" | 18'-3" | 20'-0" |
| LP2-1410 | 14'-0" | 17'-3" | 19'-3" | 21'-0" |
| LP2-1510 | 15'-0" | 18'-3" | 20'-3" | 22'-0" |
| LP2-1610 | 16'-0" | 19'-3" | 21'-3" | 23'-0" |
| LP2-1710 | 17'-0" | 20'-3" | 22'-3" | 24'-0" |
| LP2-1810 | 18'-0" | 21'-3" | 23'-3" | 25'-0" |
| LP2-1910 | 19'-0" | 22'-3" | 24'-3" | 26'-0" |
| LP2-2010 | 20'-0" | 23'-3" | 25'-3" | 27'-0" |

Dimensions are from top of lower rail.

INSTALLATION KIT (1 Required Per Lift)

Part Number: use LP2 [booth length] [booth height] with suffix IK

(i.e. LP26020-1K)

Change prefix LP2 to LP4 for 4th Axis Inside Descent Lift.

Kit includes:

- Upper and lower rails for mounting lift to booth walls with lower rail stops, and all mounting hardware.
- Festooning system with trolleys, main air supply hose and hose support grip. System is capable of carrying 2 additional lines, supplied by customer, up to 3/4" I.D. for breathing air and paint line or auxiliary air line for paint equipment.

OPTIONAL:

| OPTION | P/N | OPTION | P/N |
|------------------------------------|-------------|------------------------------|---------------------|
| Upper Rail Spacer Kits | 201-0974 | 5 Gallon paint pot kit | 201-2350 |
| 4x4 Overspray cover | 201-1024 | Lower rail scraper kit | 201-2251 |
| Lower rail guides | 201-0074 | Front gate | Consult Factory |
| Auxiliary flex track | 201-0075 | Receiver Steps | Left Side: 201-2256 |
| Safety contact bumper system | 202-0268-03 | Right Side: 201-2255 | |

SEE PAGE 17 FOR OPTION DESCRIPTION

Note: Model selected should not exceed the inside height of booth. For calculation take the raised floor height (Dimension A) of the lift plus an additional 7' for personnel.

- All models meet applicable OSHA/ANSI Standards as interpreted by LPI, Inc.